

## BIBLIOGRAPHY

Alford, Roger

1986 Nearly Impossible Task Over, Brother Mayes Laid to Final Rest.  
*Middlesboro Daily News*. 11 March.

Alsberg, Henry G., editor

1949 *The American Guide: A Source Book and Complete Travel Guide for the United States*. Hastings House, New York. In possession of Claudette Stager, Tennessee Historical Commission, Nashville.

American Automobile Association (AAA)

1934 *AAA Southeastern Tour Book*. American Automobile Association, Washington, D. C.

*Appalachian Journal*

1928 Greeneville Becomes...Great Tourist Center. September:2.

Armstrong, Zella

1931 *The History of Hamilton County and Chattanooga, Tennessee*.  
Volume 1. Lookout Publishing Company, Chattanooga.

*Atlanta Constitution*

1915 Dixie Highway Tourists will Arrive in Atlanta. 15 October.

*Atlanta Journal-Constitution*

1995 Rock City Enshrined. 23 July.

Atlanta Scrapbook

circa 1925-1928 On file, Historic Preservation Division, Georgia Department of Natural Resources, Atlanta.

Aycock, Roger

1981 *All Roads to Rome*. W. H. Wolfe Associates, Roswell, Georgia.

Barr, Thomas Calhoun Jr.

1961 *Caves of Tennessee*. Tennessee Division of Geology, Nashville.

Bartow County Survey

1990 Bartow County (Georgia) Survey Report. On file, Historic Preservation Division, Georgia Department of Natural Resources, Atlanta.

- Bayer, Linda  
1982-1983 Roadside Architecture. *The Historic Huntsville Quarterly of Architecture and Preservation*. Fall/Winter:1-40.
- Belasco, Warren, James  
1979 *Americans on the Road: From Autocamp to Motel, 1910-1945*. MIT Press, Cambridge.
- Billings, M. P.  
1972 *Structural Geology*. Prentice-Hall, Inc., Englewood Cliffs, New Jersey.
- Brewster, Gaines  
1988 Jeff Davis Marker Stands Restored. *DeKalb News Sun*. 3 August.
- Bristol Herald Courier*  
1919 Lee Highway. 12, 13 December.
- Brown, Fred  
1995 Sign of the South. *Atlanta Journal-Constitution*. 20 August.
- Bruner, Eric S.  
1997 History on the Highways. [Columbus, GA] *Ledger-Enquirer*. 21 September.
- Bythe, Robert  
1998 Atlanta Campaign Pavilions. Interview with Jeffrey L. Durbin. 1 October.
- Cadle, Dean  
1949 The Man Behind the Signs. *Louisville Courier-Journal*. 23 January:5-8.
- CARTA (Chattanooga Area Regional Transit Authority)  
1993 History of the Lookout Mountain Incline Railway. Chattanooga Area Regional Transit Authority, Chattanooga.
- Carver, Martha  
Varies Postcard Collection. Tennessee Department of Transportation, Environmental Planning Office, Nashville.  
circa 1950 Dixie Highway Strip Map. Tennessee Department of Transportation, Environmental Planning Office, Nashville.  
N.D. Bridge Survey. Tennessee Department of Transportation, Environmental Planning Office, Nashville.

- 1978 National Register Nomination, *Fountain Square*. Chattanooga, Tennessee. Copy on file, Tennessee Historical Commission, Nashville.
- 1979 National Register Nomination, *Market Square/Patten Parkway*. Chattanooga, Tennessee. Copy on file, Tennessee Historical Commission, Nashville.

Chance, Marsha A. and Greg C. Smith

- 1993 Section 106 Consultation Case Report and Supporting Documentation for the St. Marys River Bridge Replacement Project, Nassau County, Florida and Camden County, Georgia. Copy of report on file at Historic Preservation Division, Georgia Department of Natural Resources, Atlanta.

Chapin, Bill

- 1998 Rock City. Personal correspondence with Martha Carver. 3, 4 September.

Chattanooga Automobile Club

- 1907-1976 Chattanooga Automobile Club Collection including Minutes of the Chattanooga Automobile Club, Chattanooga-Hamilton County Bicentennial Library, Chattanooga.

Chattanooga Railway & Light Company

- 1913 Brochure and Itinerary to Civil War Battlefields [No title]. In possession of Claudette Stager, Tennessee Historical Commission, Nashville.

*Chattanooga Times*

- 1918 Will Cummings. 25 February.
- 1937 Will Cummings. 21 October.
- 1953 Motel is Planned Here for Colored. 22 October.
- 1969 Will Cummings. 10 March.
- 1976 Chattanooga Club Spans History of Auto in South. 8 August:D-1

Chattanooga, Inc.

- circa 1945 Chattanooga Tours. Chattanooga, Inc., affiliated with Chattanooga Chamber of Commerce. In possession of Claudette Stager, Tennessee Historical Commission, Nashville.

Cheatham, Mike

- 1998 Cartersville Coca-Cola Bottler. Interview with Jeffrey L. Durbin. 22 September.

City of Dalton and Whitfield County

1976 *Today and Tomorrow Become Yesterday. The City of Dalton and the County of Whitfield in the State of Georgia Celebrate the National Bicentennial.* Privately printed, Dalton.

Clason Map Company

circa 1920a Clason's Green Guide to Tennessee. Clason Map Company, Chicago. On file, Tennessee Department of Transportation, Nashville.

circa 1920b Mileage Map of the Transcontinental Trails of the Engineers United States. Clason Map Company, Chicago. On file, Tennessee Department of Transportation, Nashville.

Cloues, Richard

1983 National Register Nomination, *Between the Rivers Historic District.* Rome, Georgia. Copy on file, Historic Preservation Division, Georgia Department of Natural Resources, Atlanta.

1988 National Register Nomination, *Dalton Commercial Historic District.* Dalton, Georgia. Copy on file, Historic Preservation Division, Georgia Department of Natural Resources, Atlanta.

1988 Amendment to National Register Nomination, *Between the Rivers Historic District.* Rome, Georgia. Copy on file, Historic Preservation Division, Georgia Department of Natural Resources, Atlanta.

Coca-Cola Bottler

1950 First Wall to Advertise Coca-Cola is Still in Use. *Coca-Cola Bottler.* February:49.

Coca-Cola Company

circa 1920 *Coca-Cola Outdoor Paint.* Copy on file Historic Preservation Division, Georgia Department of Natural Resources, Atlanta.

1994 *Refreshing Facts about Coca-Cola.* Copy on file Historic Preservation Division, Georgia Department of Natural Resources, Atlanta.

Coleman, Kenneth

1977 *A History of Georgia.* 1st edition. University of Georgia Press, Athens.

*Columbus Enquirer Sun*

1920 Dixie Overland Highway Soon to be Formally Opened. 16 July.

Crawford, Byron

1983 God's ad man...Kentuckian erected a multitude of 'Get Right with God' signs. *Louisville Courier-Journal.* 16 November.

Cross, Paul

1990 National Register Nomination, *Sanders Court and Cafe*. Corbin, Kentucky. Copy on file, Kentucky Heritage Commission, Frankfort.

Crown Gardens and Archives/Whitfield-Murray Historical Society

N.D. Before Carpet, Chenille was King, and U.S. 41 was Known as Peacock Alley. Dalton, Georgia.

Cutler, Phoebe

1985 *The Public Landscape of the New Deal*. Yale University Press, New Haven.

Dalton, Georgia Junior Chamber of Commerce

1929 *Motorcade Edition of the Jaw Cracker*. 4 November.

Dickinson, Eleanor and Barbara Benziger

1974 *Revival!* Harper and Row, New York.

*The Dixie Highway*

1915-1927 Monthly Magazine published by the Dixie Highway Association. Following issues in possession of authors: March and October 1921, February and May 1924.

Dixie Highway Association

1915-1927 Dixie Highway Association Collection including Minutes of the Dixie Highway Association. Within the Chattanooga Automobile Club Collection, Chattanooga-Hamilton County Bicentennial Library, Chattanooga.

Doster, Gary L.

1991 *From Abbeville to Zebulon: Early Post Card Views of Georgia*. University of Georgia Press, Athens.

*Douglas Enterprise*

1948 Uncle Remus Route Gets Official U.S. Designation. 23 September.

Drinnon, Elizabeth McCants

1997 *Stuckey: The Biography of Williamson Sylvester Stuckey*. Mercer University Press, Macon, Georgia.

Durbin, Jeffrey L.

Varies Postcard Collection. Decatur, Georgia.

- 1989 *Survey Techniques For Roadside Architecture: The Gas Station, Murfreesboro, Tennessee, As a Case Study*. Thesis, Master of Arts in History, Middle Tennessee State University, Murfreesboro.
- 1997 *Filling Stations, Barbecue Stands, and Tourist Homes: Southern Roadside Architecture, 1920-1950*. Paper Given to Meeting of Southeastern State Historic Preservation Officers, Athens Georgia. November 2-5.

*Encyclopedia Britannica*  
1979 edition. Bridges.

Evans, E. Raymond and Vicky Karhu  
1985 National Register Nomination, *Lookout Mountain Caverns and Cavern Castle (Ruby Falls)*. Copy on file, Tennessee Historical Commission, Nashville.

Ezzell, Timothy P.  
1998 Chattanooga. *The Tennessee Encyclopedia of History and Culture*. Rutledge Hill Press, Nashville.

Federal Writers' Project

- 1939 *The WPA Guide to Tennessee*. Compiled and Written by the Federal Writers' Project of the Works Projects Administration for the State of Tennessee. Viking Press, New York. Reprinted 1986, University of Tennessee Press, Knoxville.
- 1940 *Georgia: A Guide to its Towns and Countryside*. Compiled and Written by the Federal Writers' Project of the Works Projects Administration in the State of Georgia. The University of Georgia Press, Athens. Reprinted 1973, Somerset Publishers, St. Clair Shores, Michigan.

Federal Works Agency

1943 Georgia Transportation Map. On file Map Room, Science Library, University of Georgia, Athens.

Fenneman, N. M.

1938 *Physiography of Eastern United States*. McGraw Hill, New York.

Folmsbee, Stanley, Robert Corlew, and Enoch Mitchell

1969 *Tennessee A Short History*. University of Tennessee Press, Knoxville.

Fricker, Donna

1989 Architecture and the Automobile Age. *Preservation in Print*. November:7-9.

Georgia Battlefields

- 1998 News Briefs [Cassville] Atlanta Campaign Pavilion. September.  
Georgia Department of Transportation  
1998-1999 Georgia Highway Map.

Georgia Department of Transportation  
1998-1999 Georgia Highway Map.

Georgia Department of Transportation and A. G. Lichtenstein & Associates, Inc.  
1997 Georgia Historic Bridge Survey. On file Historic Preservation Division,  
Georgia Department of Natural Resources, Atlanta.

Georgia Highway Department  
1926 Georgia System of State Roads Map. On file Map Room, Science  
Library, University of Georgia, Athens.

Georgia Historical Commission  
1956 First Paving, Marker #126-10. Georgia Historical Commission, Atlanta.

Georgia State Highway Board  
1940 Highway Maps for Bartow, Catoosa, Floyd, Walker, and Whitfield  
Counties. On file Map Room, Science Library, University of Georgia,  
Athens.

Gibson, John  
1994 U.S. 17 Became Backbone of Camden County [Georgia]. *The  
Southeast Georgian*. 28 December:5, 16.

Hardison, Lillian Hooper  
1994 *Coca-Cola Bottling Plants in Georgia: The Preservation of Standardized  
Early 20<sup>th</sup> Century Commercial Buildings*. Thesis, Master of Historic  
Preservation, University of Georgia, Athens.

Hilles, William C.  
1958 *The Good Roads Movement in the United States: 1880-1916*. Thesis,  
Master of Arts. Graduate School of Arts and Sciences, Duke University,  
Durham, North Carolina.

Historic Preservation Committee, Rome Area Chamber of Commerce  
circa 1971 Historic Rome. Privately printed, Rome, Georgia.

Historic Preservation Division, Georgia Department of Natural Resources  
1994 *Crossroads of Conflict: A Guide for Touring Civil War Sites in Georgia*.  
Copy on file at Historic Preservation Division, Atlanta, Georgia.

Hixson, Fred  
1962 *The Age of Will Cummings*. Privately printed, Chattanooga.

Hokanson, Drake  
1988 *The Lincoln Highway*. University of Iowa Press, Iowa City.

Hoobler, James A.  
1986 *Cities Under the Gun: Images of Occupied Nashville and Chattanooga*.  
Rutledge Hill Press, Nashville.

Irwin, Ned L.  
1998 *The Tennessee Encyclopedia of History and Culture*. ed. Carroll Van  
West, Rutledge Hill Press, Nashville.

J. Newcomb Publisher  
1925 *Up and Down the Dixie Highway*. Brooklyn. Available at the  
Chattanooga Hamilton County Regional History Museum, Chattanooga.

Jakle, John A.  
1978 The American Gasoline Station, 1920-1970. *Journal of American  
Culture*. Fall:520-542.

Jakle, John A. and Keith A. Sculle  
1994 *The Gas Station in America*. Johns Hopkins University Press,  
Baltimore.

Jenkins, David B.  
1996 *Rock City Barns: A Passing Era*. Free Spirit Press, Chattanooga.  
1998 See Rock City: Survivors of An Era. *AAA Going Places*.  
March-April:22-24.

Johnson, Leland  
1978 *Memphis to Bristol: A Half Century of Highway Construction*.  
Tennessee Road Builders Association, Nashville.

Joint Board on Interstate Highways  
1927 Map of Tennessee Showing the Interstate Routes Adopted by Joint  
Board on Interstate Highways. Tennessee State Library and Archives  
#1287, Nashville.



- Jones, James B.  
1989 National Register Nomination, Multiple Property Listing, *Pre-TVA Hydroelectric Development in Tennessee, 1901-1930*. Copy on file, Tennessee Historical Commission, Nashville.
- Kincaid, Robert  
1947 *The Wilderness Road*. Bobbs-Merrill, New York.
- King, Harold  
1998 Roy's Grill, Rossville, Georgia. Interview with Jeffrey L. Durbin. September 28.
- Kinnard, Gretchen  
1998 Camp Dixie, Tunnel Hill, Georgia. Interview with Jeffrey L. Durbin. September 18.
- Kirwin, Liza  
1987 Documenting Contemporary Southern Self-taught Artists *The Southern Quarterly: A Journal of the Arts in the South*. Fall:57-75.
- Kolwyck, Clarence  
1976 Chattanooga Automobile Club and Dixie Highway Association. *The Motorist*. July/August:5, 11.
- Krakov, Kenneth  
1994 *Georgia Place Names: Their History and Origins*. 2<sup>nd</sup> Edition. Winship Press, Macon.
- Leach, Sara Amy  
1996 Pines to Palms: A Drive along the Ocean Highway. *SCA Journal*. Spring:28-32.
- Liebs, Chester  
1985 *Main Street to Miracle Mile*. Little, Brown, Boston.
- Livingood, James W.  
1981 Hamilton County. Memphis State University Press, Memphis.
- Longino, Miriam  
1996 Tuft Love. *Atlanta Journal-Constitution*. 20 October.

1996 Chenille Spreads were Warp, Woof of a Region. *Atlanta Journal-Constitution*. 20 October.

*Louisville Courier-Journal*

1992 Work of Barnyard Rembrandt Fading, But Fond Memories Remain. 28 November.

Luther, Edward T.

1977 *Our Restless Earth: The Geologic Regions of Tennessee*. University of Tennessee Press, Knoxville.

MacDowell, Betty

1982 Religion on the Road: Highway Evangelism and Worship Environments for the Traveler in America. *Journal of American Culture*. Winter:63-74.

Macpherson, Joseph T.

1969 *Democratic Progressivism in Tennessee: The Administration of Governor Austin Peay, 1923-1927*. Ph.D. Dissertation, Vanderbilt University, Nashville.

Marion County

1979 1924 Quit Claim Deed, Deed Book 9-A:21.

Marion County Historical Society

1990 *The Story of Marion County: Its People and Places*. Compiled by the Marion County Historical Society. Curtis Media, Dallas.

Martin, Sara Hines

1998 Traffic Always Heavy at 4-Way Lunch Cafe. *North Georgia Journal*. Summer:45-47.

Matthews, Gary

1976 Mountains Highways and Byways. *Grundy County Herald*. 2 September.

Mielnik, Tara Mitchell

1997 Draft National Register Nomination, *Atlanta Campaign Wayside*. Ringgold Georgia. Copy on file, Historic Preservation Division, Georgia Department of Natural Resources, Atlanta.

Miles, Jim

1989 *Fields of Glory: A History and Tour Guide of the Atlanta Campaign*. Rutledge Hill Press, Nashville.

Murphy, Kimberley

1997 National Register Nomination, *Rockwood Historic District*. Copy on file, Tennessee Historical Commission, Nashville.

Nashville Automobile Club

circa 1920 Official Souvenir Map Showing Tennessee Division of Southern Appalachian Highways. Tennessee State Library and Archives #2218, Nashville.

National Association of Travel Organizations

1964 *This Week in Tennessee, Alabama, Georgia*. Free circular of local tourist attractions. April. In possession of Claudette Stager, Tennessee Historical Commission, Nashville.

National Map Company

circa 1920 Named Highways (of Tennessee). National Map Company, Indianapolis. Tennessee State Library and Archives #1900, Nashville.

National Park Service

1998 Chattanooga Area Civil War Sites Assessment. Copy on file at Historic Preservation Division, Georgia Department of Natural Resources, Atlanta.

*New York Times*

1925 Chattanooga Automobile Club. 14 October.

*Newport Plain Talk*

1925, 1927 Wolf Creek Bridge and Dixie Highway, Coker County. 7 July 1925; 1, 5 July 1927.

Nickle, Mrs. Elmer

1993 Airplane Service Station, Knoxville. Telephone interview with Martha Carver, 14 April.

Ochs, Martin

1962 *Dixie Highway Trailblazer, Judge M. M. Allison*. Speech given to Chattanooga Area Historical Association, 20 November 1962. Chattanooga Automobile Club Collection, Chattanooga-Hamilton County Bicentennial Library, Chattanooga.

*Parking*

1980 Historic Garage. April:33.

- Patten, Carter  
1962 Signal Mountain and Walden's Ridge. Privately printed, Chattanooga.
- Paxson, F. L.  
1946 The Highway Movement, 1916-1935. *American Historical Review*.  
51:236-253.
- Poole, Sheila M.  
1989 Coke Sign in Cartersville may be Firm's First-Ever. *Atlanta Journal-Constitution*. 3 June.
- Pope, Robert Dean  
1976 *Senatorial Baron: The Long Political Career of Kenneth D. McKellar*.  
Ph.D. Dissertation, Yale University, New Haven.
- Preston, Howard Lawrence  
1991 *Dirt Roads to Dixie*. University of Tennessee Press, Knoxville.
- Quality Courts United, Inc.  
1955 *Quality Courts Guide Book*. Quality Courts United, Inc. Printed in USA.  
Guide Book Distributor: L. Verburg, Browns Court, Fredricksburg, Virginia.  
In possession of Claudette Stager, Tennessee Historical Commission,  
Nashville.
- Raflo, Lisa and Jeffrey L. Durbin  
1995 Teal Roofs and Pecan Logs: A History of Stuckey's Pecan Shoppes  
*SCA Journal*. Fall 1995:2-8.
- Rand McNally & Company  
circa 1920 Special Auto Trails Map Kentucky and Tennessee Rand McNally  
and Company, Chicago. Tennessee State Library and Archives #1678,  
Nashville.  
1926 Rand McNally Junior Auto Trails Map. On file Map Room, Science  
Library, University of Georgia, Athens.  
1929 Rand McNally Junior Auto Road Map. On file Map Room, Science  
Library, University of Georgia, Athens.
- Reinolds, Chris  
1998 Forerunner of I-75 has Seen Ups, Downs. *Atlanta Journal Constitution*.  
22 June.

- Rifkind, Carole  
1980 *A Field Guide to American Architecture*. New American Library, Times Mirror, New York.
- Rochell, Anne  
1997 Barnstorming History. *Atlanta Journal-Constitution*. 14 December.
- Rogers, Jonathan  
1991 Growing Pains: Flagler is Growing Fast--and Feeling It. *Florida Times-Union*, 22 September.
- Rome Area Heritage Foundation, Inc.  
1977 *A Brief Summary of Floyd County's Historical Sites*. Rome Area Heritage Foundation, Inc., and Rome-Floyd County Planning Commission. Copy on file at Historic Preservation Division, Georgia Department of Natural Resources, Atlanta.
- Rome Historic Preservation Committee  
1971 *Historic Rome*. Historic Preservation Committee of the Rome Area Chamber of Commerce. Copy on file at Historic Preservation Division, Georgia Department of Natural Resources, Atlanta.
- Scharff, Virginia  
1991 *Taking the Wheel: Women and the Coming of the Motor Age*. Free Press, New York.
- Schlereth, Thomas J.  
1985 *U.S. 40: A Roadscape of the American Experience*. Indiana Historical Society, Indianapolis.
- Scruggs, Carroll Proctor  
1973 *Georgia Historical Markers*. Bay Tree Groves Publishers, Valdosta, Georgia.
- Sculle, Keith  
1990 Frank Redford's Wigwam Village Chain in Roadside America: *The Automobile in Design and Culture*. ed. Jan Jennings, Ames Iowa: Iowa State University Press for the Society of Commercial Archaeology.
- Seward, Harry M.  
1937 *Scenes and Information about Rockwood*. Promotional booklet printed by the Times Printing Company of Rockwood. Reprinted by Rockwood Business and Professional Women's Club, 1993.

Sharp, Leslie

1993 *Down South to Dixie: The Development of the Dixie Highway from Nashville to Chattanooga, 1915-1940*. Thesis, Master of Arts in History, Middle Tennessee State University, Murfreesboro.

1998 National Register Nomination, *North Wall Street Historic District*. Cartersville, Georgia. Copy on file, Historic Preservation Division, Georgia Department of Natural Resources, Atlanta.

Signal Mountain

Varies. Clipping File, Signal Mountain--Walden's Ridge. Chattanooga-Hamilton County Bicentennial Library, Chattanooga.

Smallwood, Barbara

1987 *The Coca Cola Trail Go: The Authentic Guide to Atlanta*. March:4-6.

Society for Commercial Archeology

1987 Leave the Siding to Us. *SCA NewsJournal*, Fall:10.

1993 Rock City Barns Headed Out to Pasture. *SCA News*, Summer:3-4.

Space Ship House

Varies. Clipping File, Space Ship House. Chattanooga-Hamilton County Bicentennial Library, Chattanooga.

State of Tennessee

1923-1924 *Biennial Report of the Commissioner of the Department of Highways and Public Works for the years 1923 and 1924*. State of Tennessee Department of Highways and Public Works, Nashville.

Stilgoe, John R.

1983 *Metropolitan Corridor: Railroads and the American Scene*. Yale University Press, New Haven.

Storey, Steve

1997 *The Peach State Glove Box Guide to Barbecue*. Longstreet Press, Atlanta.

Superior Courts United

1956 *Superior Courts Guide Book*. Superior Courts United, Inc. Guide editor and distributor, L. F. McCaskill, Rockingham, North Carolina. In possession of Claudette Stager, Tennessee Historical Commission, Nashville.

Tennessee Department of Highways and Public Works  
1929 Highway Map of Tennessee Showing the Foreign Traffic Distribution on  
State Highway System. Tennessee State Library and Archives #574,  
Nashville.

*Tennessee Highways*

1921-1927 *Tennessee Highways*. Succeeded by *Tennessee Highways and  
Public Works*. Published by the Tennessee Department of Highways and  
Public Works except 1924 when published by the Tennessee Good Roads  
Association.

Tennessee State Highway Commission

1915-1919 Tennessee State Highway Commission Minutes, Volume I  
Available at the Tennessee State Library and Archives, State Highway  
Department Collection.

*Tennessean* (Nashville)

1991 Rock City Barns. 14 July:J-1.

Thomas, Kenneth H. Jr.

1990 National Register Nomination. *Lookout Mountain Fairyland Club*.  
Lookout Mountain, Georgia. Copy on file, Georgia Department of Natural  
Resources, Atlanta.

Toplovich, Ann

1983 Dancing and Fiddling in the Cool of the Cave: Dance Caves in  
Tennessee. *The Courier*. June:4-5.

Tourist Guides, Inc.

1947 *Travaho Trails through Georgia*. Tourist Guides, Inc., Atlanta.

Travel Bureau of American Automobile Association

1956 *Named Highways of the United States*. American Automobile  
Association Library, Falls Church, Virginia.

Tune, Aubrey

1994 Concrete Cross, Smyrna. Interview with Martha Carver. April 10.

United Motor Court Association

1942 *United Motor Courts Brochure*. 10th Edition, Free Guide, "All Roads  
Lead to United Motor Courts, Comfortable and Safe." Copy in possession  
of Martha Carver, Tennessee Department of Transportation, Nashville.

University of Georgia Press  
1982 *Vanishing Georgia*. Athens.

Vieyra, Daniel  
1979 *An Architectural History of America's Gas Stations*. Collier Macmillan Publishers, New York.

Volunteer State Publishing Company  
1929 *Good Roads in Sunny Tennessee*. Volunteer State Publishing Company, Nashville.

West, Carroll Van  
1995 *Tennessee's Historic Landscapes: A Traveler's Guide*. University of Tennessee Press, Knoxville.

Whitfield County History Commission  
1936 *Official History of Whitfield County, Georgia*. A. J. Showalter Company, Dalton, Georgia. Copy on file at Historic Preservation Division, Georgia Department of Natural Resources, Atlanta.

Wick Don  
1980 See Rock City. *Tennessee Conservationist*. November-December:17-19.

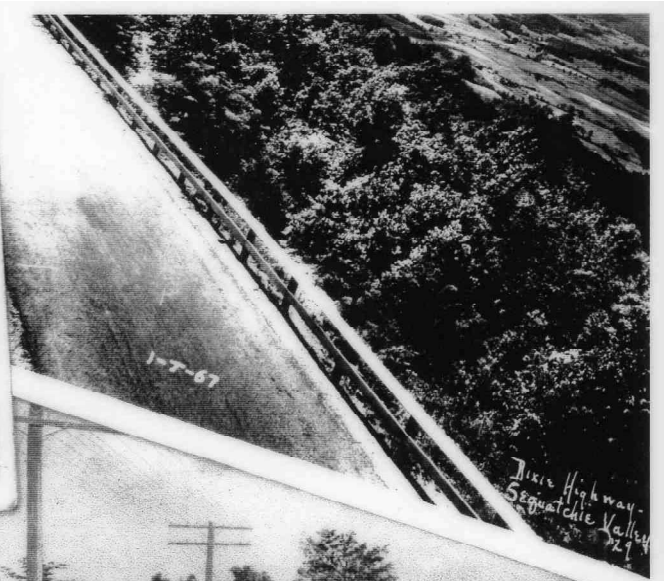
Wigginton, Eliot and Margie Bennett, editors  
1986 *Watchman on the Wall*. *Foxfire 9*. Anchor Press/Doubleday, Garden City, New York.

Wilson, John  
1980 *Chattanooga's Story*. Chattanooga News Free Press, Chattanooga.





DIXIE HIGHWAY, U.S. 41  
ACROSS LOOKOUT MOUNTAIN, TENN.



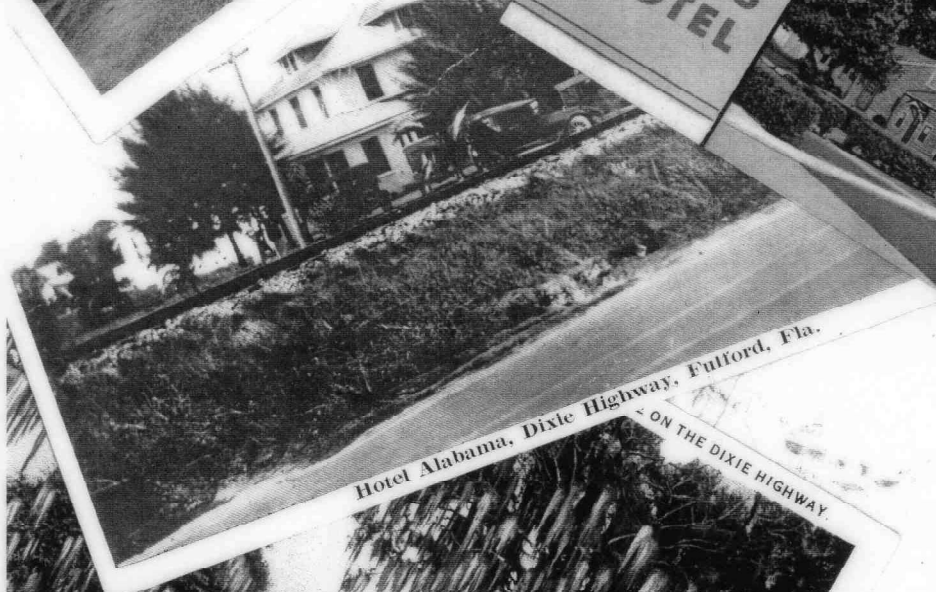
Dixie Highway -  
Sequatchie Valley  
Tenn.



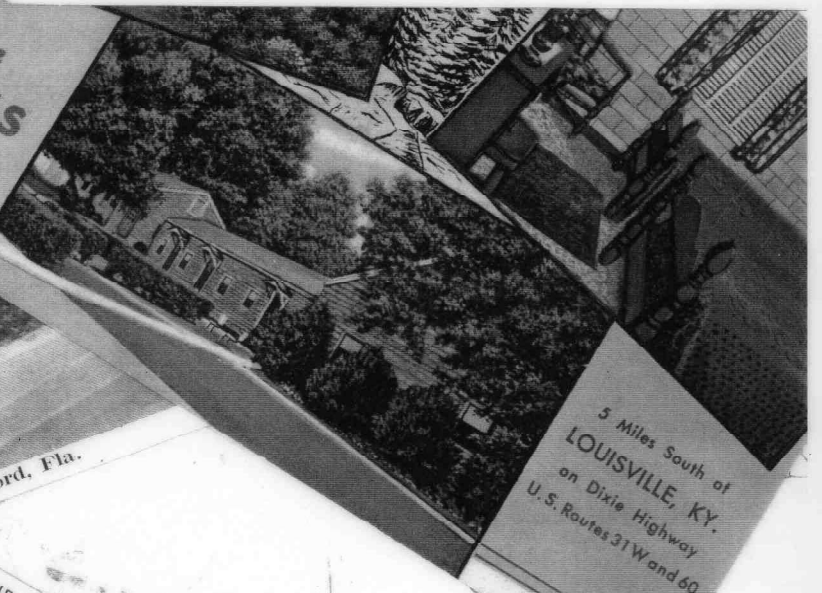
ROCK CUT ON DIXIE HIGHWAY, NEAR MONTEAGLE, TENN.



SCENE ON DIXIE HIGHWAY SOUTHEAST OF SHELBYVILLE, TENN.



Hotel Alabama, Dixie Highway, Fullford, Fla.  
ON THE DIXIE HIGHWAY



5 Miles South of  
LOUISVILLE, KY.  
on Dixie Highway  
U. S. Routes 31 and 60



CUMBERLAND PARK ON DIXIE HIGHWAY, SEWANEEN, TENN.